



Engineering Virtual Learning

HS Machine Drafting

Lesson #31

May 18, 2020



Objective/Learning Target:
Students will Learn about the use of
Line Weight in Drafting.

Bell Ringer:

Watch these videos about line weight.

https://www.youtube.com/watch?v=YEYQe_81M4U

<https://www.youtube.com/watch?v=YROiMGiKUf0>

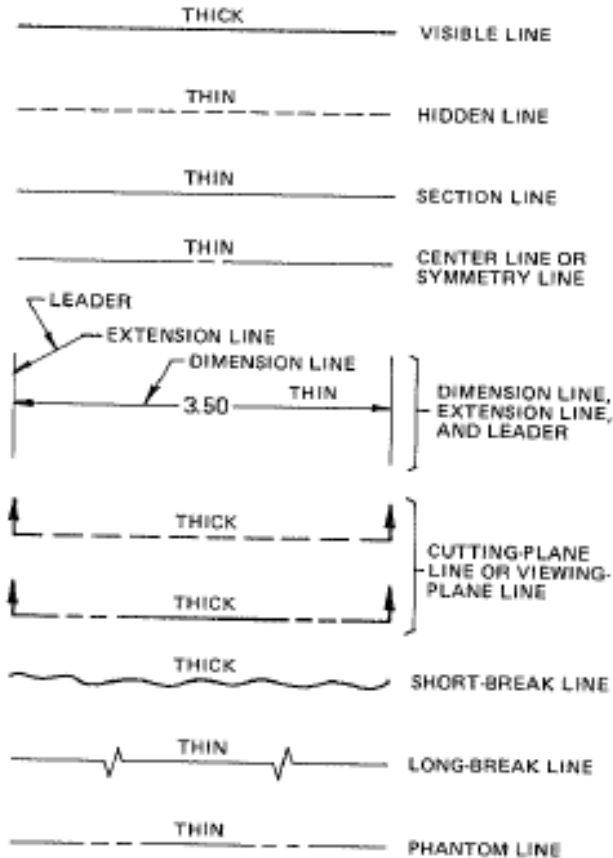
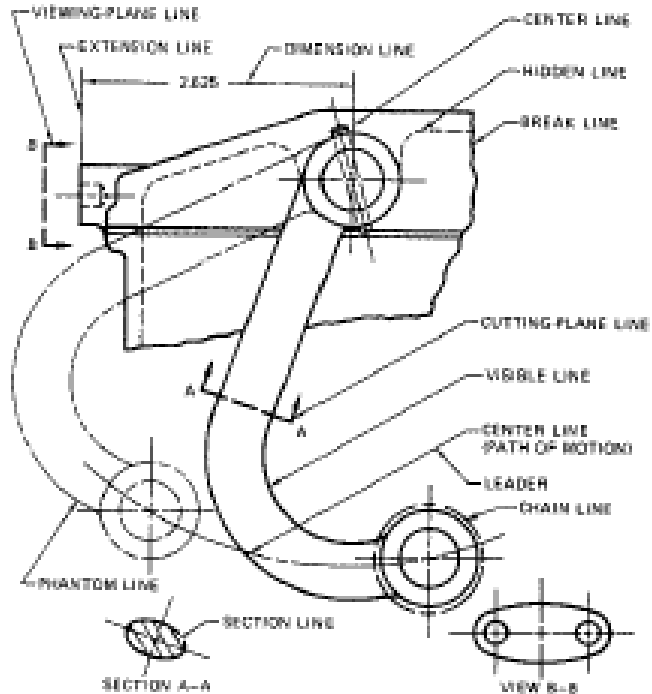
How can Line Weight affect your drawings?

Learning Practice: Line Weight Activity

Use the examples below to complete the activity on the next page in your engineers notebook:

THE ALPHABET OF LINES (ANSI)

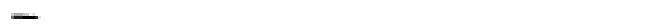
The illustrations below are for your information while completing the assignments on lines and line weights (thicknesses).



ASSIGNMENT

Using pencil, draw additional lines that match the density and width of the printed samples shown below.

VISIBLE LINES



HIDDEN LINES



SECTION LINES



CENTER LINES



DIMENSION LINES



CUTTING-PLANE LINES



VIEWING-PLANE LINES



CUTTING-PLANE LINES



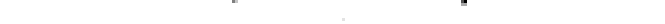
VIEWING-PLANE LINES



SHORT-BREAK LINES



LONG-BREAK LINES



PHANTOM LINES



Learning Resource Links:

Line Weight:

https://www.youtube.com/watch?v=YEYQe_81M4U

<https://www.youtube.com/watch?v=vh-QKKRFD14>

Concept Sketching:

https://www.youtube.com/watch?v=z8_-J8V6E38

<https://www.youtube.com/watch?v=s80WqMyVIsY>

Grid and Isometric Graph paper:

https://www.printablepaper.net/category/isometric_graph